

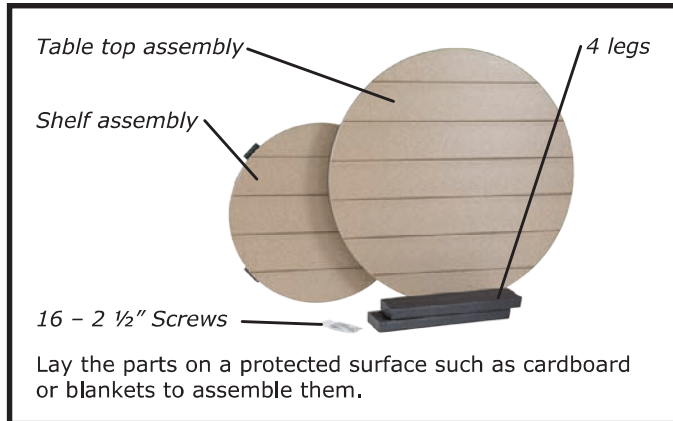
# Assembly Instructions

For 38" SeaAira Conversation Table

**Tools Needed:** #2 square bit screw driver or power driver, No drilling is required. All the necessary holes are predrilled.

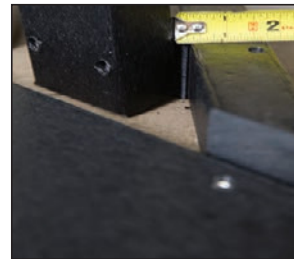


## Parts



## Step 2 — Fasten table top assembly

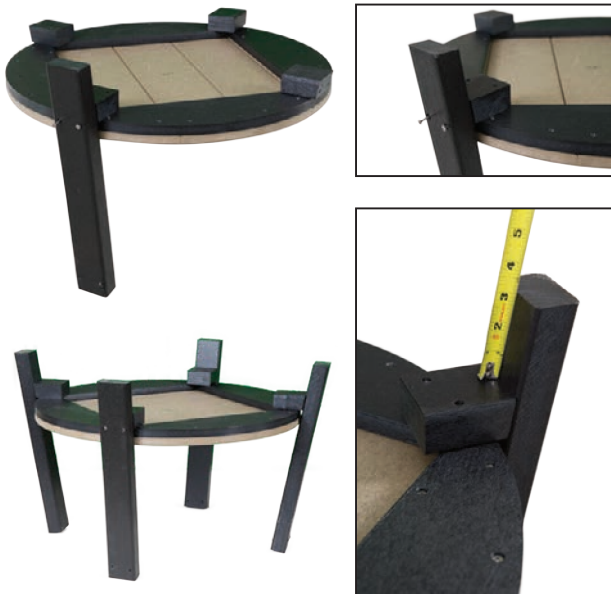
2 1/2" Screws, table top assembly



Place the table top assembly upside down on a clean, flat work surface. Position the shelf assembly with legs on top. Align the boards in the top and bottom to run the same direction. Fasten the legs to the table top assembly using two 2 1/2" screws in each leg. See photo for positioning note: 1/4" space between leg and runner.

## Step 1 — Fasten legs to shelf assembly

2 1/2" Screws, 4 legs, shelf assembly



Place the shelf assembly upside down on a clean, flat work surface. Fasten the four legs to the blocks on the shelf assembly using the 2 1/2" screws. Position the end (bottom) of the leg 3" from the block.

Congratulations!  
Your 38" SeaAira Conversation Table is ready to enjoy!



\*When installing screws, tighten till the head goes slightly below the surface.