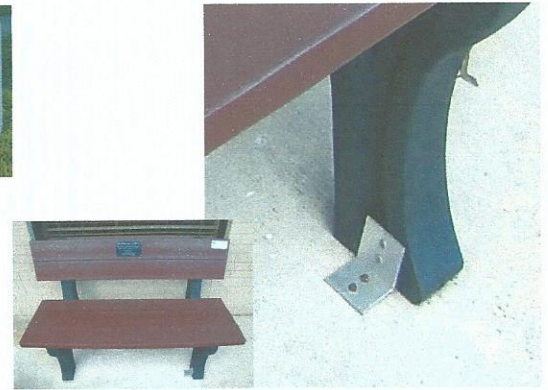




**American Recycled
Plastic Incorporated**
Outdoor Furniture & Lumber Products
www.itsrecycled.com

Instructions for installing your new park bench or picnic table to a solid surface using our **Structural Aluminum Angle L-bracket Mounting Kit.**



Each mounting kit comes with 2 brackets & 4 stainless steel screws (2 per bracket). *We do not provide any specialty hardware like the concrete screws (Tap-cons) or other decking hardware needed for your specific surface. This type of specialty hardware is available at any local hardware store.*

We recommend that you install one of the brackets on the left front leg and the other bracket on the right rear leg as you face the bench or table for typically securing unit in most environments. If your specific environment requires additional L-brackets to prevent any movement or theft (one on each outside leg or 4 brackets total), please contact us for additional mounting kits. Place the aluminum L-bracket against the bench or table leg so its flush and level. Install the 2 qty. stainless steel screws into the bench or table leg horizontally through pre-drilled bracket holes. Now install the concrete screws or other deck hardware through the bracket holes into the solid surface following specific hardware instructions from manufacturer. Rest assured knowing your newly installed hardware will never rust or corrode and should last as long as your new plastic furniture under normal conditions!



Your plastic debris will save a tree!