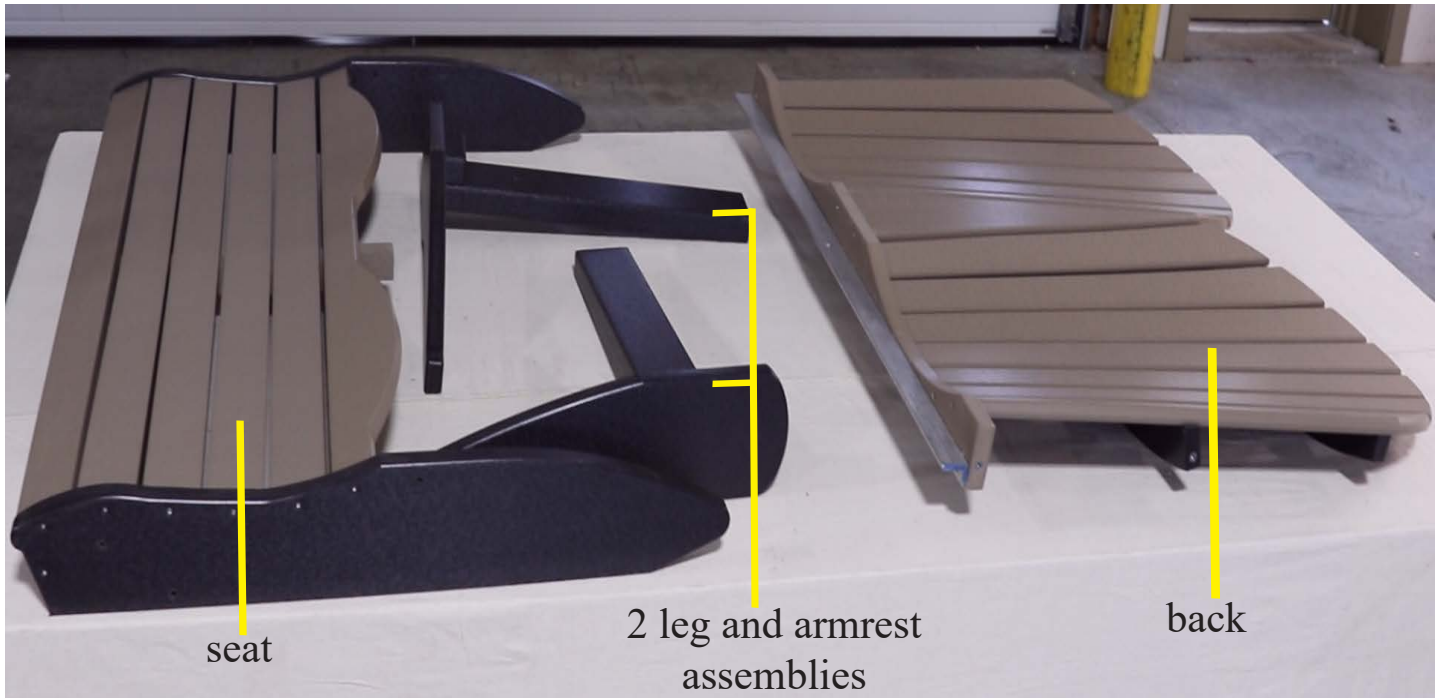


POLY ADIRONDACK LOVE SEAT



ASSEMBLY MANUAL

Parts List



Tools Required For The Job



5/32" Hex Key
(included)

*NOTE: This Hex Key is used to tighten all the screws used in the assembly process.

Step:1



Begin by fastening leg and armrest assembly to the seat.

Step:2



Fasten using two 1 1/2" bolts. Repeat on opposite side.

Step:3



Place in this position.

Step:4



Install the back.

Step:5



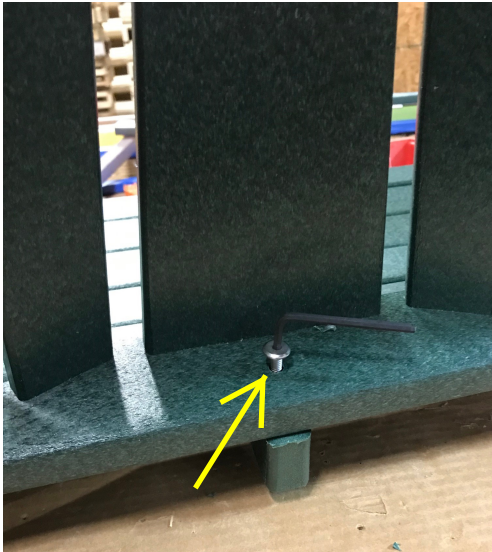
Fasten back of armrest to back using 2 1/4" bolt.
Repeat on opposite side.

Step:6



Fasten bottom of back to seat using 1 1/2" bolt.
Repeat on opposite side.
Tighten all bolts at this point.

Step:7



Fasten center of back to center of seat using 2" bolt.

Step:8



Congratulations! Your assembly is now complete. Your love seat should appear like this when complete.