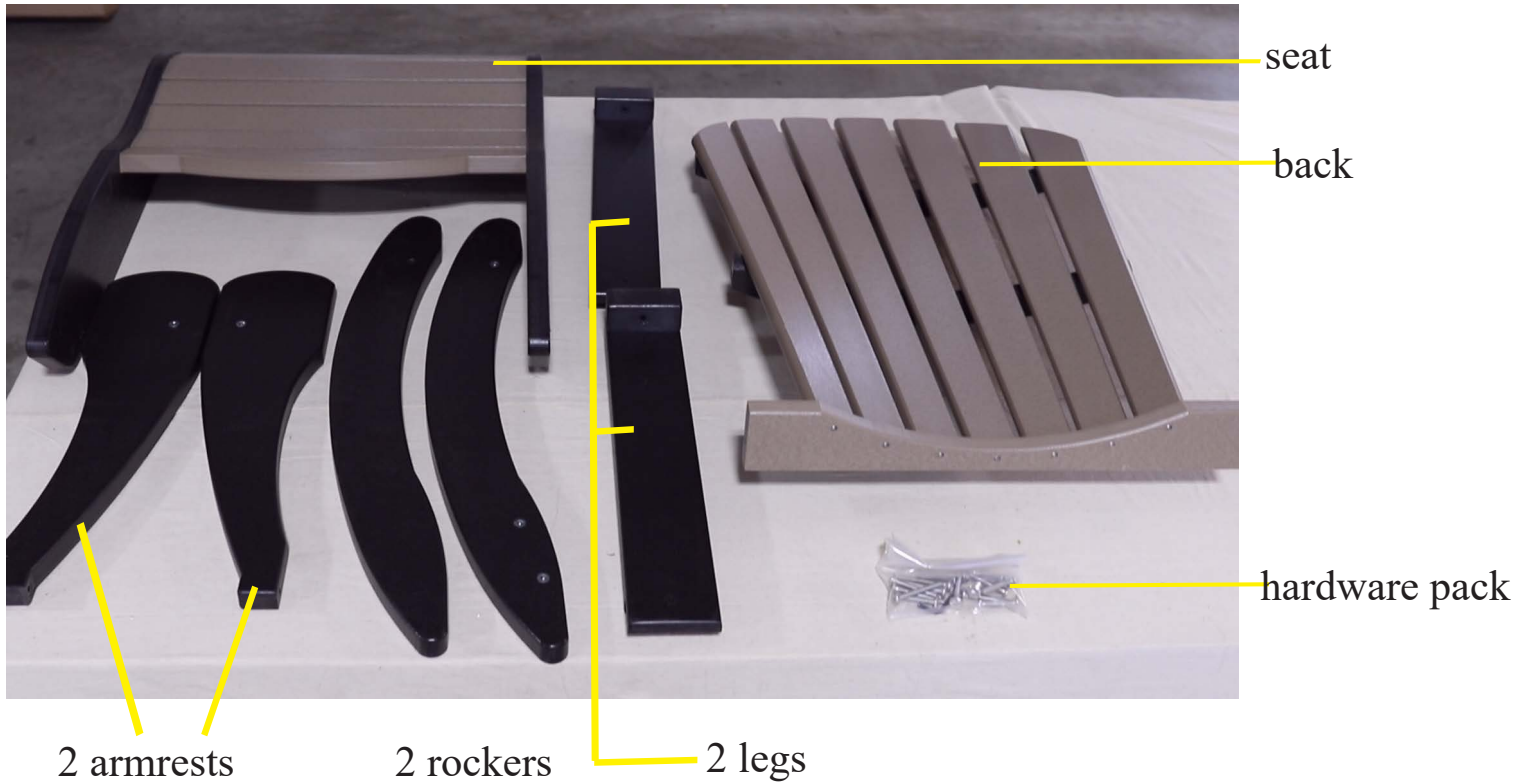


POLY ADIRONDACK ROCKING CHAIR



ASSEMBLY MANUAL

Parts List



Tools Required For The Job



5/32" Hex Key
(included)

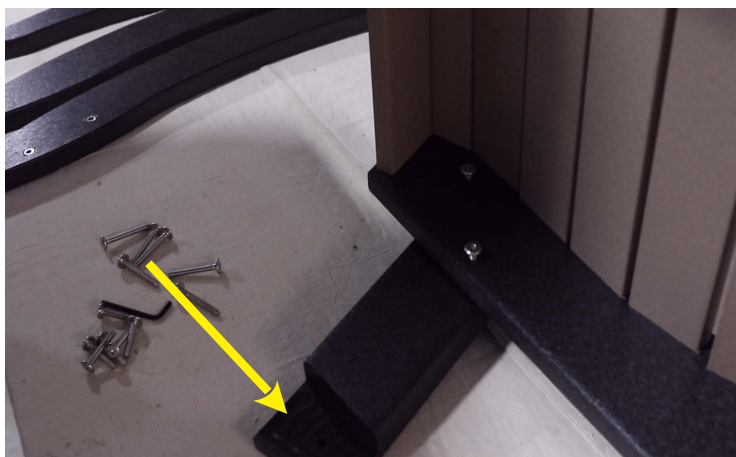
*NOTE: This Hex Key is used to tighten all the screws used in the assembly process.

Step:1



Begin by placing the seat in this position, then fasten one leg using two 1 1/2" bolts.

Step:2



Be sure notched end of leg is turned "down." This is where the rocker will fasten. Repeat step 1 on opposite side. Tighten all bolts.

Step:3



Fasten rocker to seat support using two 1 1/2" bolts. Repeat on opposite side.

Step:4



You are now ready to fasten front leg to rocker.

Step:5



Fasten using 1 1/2" bolt.
Repeat on opposite side.
Tighten all bolts.

Step:6



Fasten armrests to front leg using 2" bolt.

Step:7



You are now ready to fasten the back.

Step:8



Fasten bottom of back to seat support
using 1 1/2" bolt.
Repeat on opposite side.

Step:9



Fasten armrest to center support on back using 2" bolts.

Step:10



Congratulations! Your assembly is now complete. Your rocker should appear like this when completed.